

## Spring Will Bring Major Planning Events

Mark your calendars now for several major planning events that will unfold over the next several weeks.

### AICP Exam Review Course Offered by Chapter

Planners who registered for the AICP exam to be given in May are encouraged to sign-up for the Chapter's popular AICP exam review course. The course will consist of two Saturday sessions held on March 29 and April 19, 9 a.m. to 3 p.m. at 11 Park Place, 7th floor conference room. The course will provide an overview of the AICP exam and exam topics covered in the review materials, which are included with registration for the course. For more information, visit the NY Metro Chapter website at <http://www.nyplanning.org/aicp.html> or contact [office@nyplanning.org](mailto:office@nyplanning.org).

### Two New Web Training Sessions Scheduled

NY Metro Chapter will host two additional sessions of APA National's Audio/Web Conference Training Series. The sessions are a simple and informative way to earn 1.50 AICP Certification Maintenance credits. The fee for each session is \$10.

- Community-Based Brownfields Redevelopment - May 21, 4 p.m.– 5:30 p.m.
- Planning Law Review - June 25, 4 p.m.– 5:30 p.m.

The sessions will be held at NYMTC, 199 Water St., 22nd Floor in New York City and potentially at other locations in the Chapter's 14-county region.

### APA National Conference in Las Vegas

The annual conference promises to be another unique mix of planning sessions and real world site experiences in the somewhat unreal world of Las Vegas. Plan to attend April 27 to May 1.

### "PlaNYC One Year Later: Implementation, Impacts, Evaluation"



A year has passed since PlaNYC was announced with great fanfare. What has happened to the plan since? On April 23,

the NY Metro Chapter in partnership with NYU Wagner and the Urban Planning Students Association at NYU Wagner will sponsor a panel discussion that will address implementation and impacts as well as offer evaluations. Participants will include:

- **Ron Shiffman**  
*Professor Emeritus, Pratt University*
- **Ariella Maron**  
*Deputy Director, Office of Long-Term Planning & Sustainability, Mayor's Office of Operations*
- **Jerrilyn Perrine**  
*Executive Director, Citizens Housing and Planning Council*
- **Marcia Bystryn**  
*Executive Director, NY League of Conservation Voters*

Join fellow planners for this important progress report from 6 to 8 P.M. at:

**NYU's Puck Building**  
295 Lafayette Street  
New York, NY 10012

Program is approved for 2.0 C.M. Credits

#### In this issue:

NY Metro Chapter Elections.....	page 2
New Fellows & New Certified Planners.....	page 2
"Postcard to America" .....	page 4
Andrew Haswell Green.....	page 5
Presidential Candidates Discuss Transportation Policy.....	page 6
MillionTreesNYC.....	page 7
"Take Me to the River" .....	page 9
Vision Long Island Promotes Smart Growth at the Local Level.....	page 10
Chapter Contacts.....	page 12

## NY Metro Chapter Elections

Ballots will soon be in the mail for the election of a new Chapter Executive Committee to serve a two-year term beginning next fall. The Chapter's nominating committee has recommended the following slate for election as the Chapter's officers:

### **President**

Donald Burns, AICP

### **Vice President for Programs**

Neal Stone, AICP

### **Vice President for Intergovernmental Affairs**

Michael A. Levine, AICP

### **Vice President for Committees**

Michael Marrella, AICP

### **Vice President for Professional Development**

James Rausse, AICP

### **Secretary**

Tina Lund

### **Treasurer**

Lisa Lau, AICP

### **New York City Representative**

David Fields, AICP

### **Lower Hudson Valley East Representative**

Lukas Herbert, AICP

### **Lower Hudson Valley West Representative**

Alan Sorensen, AICP

### **Long Island Representative**

David Berg, AICP

Look for a special edition of MetroPlanner to include candidate biographical statements. The ballot will also include a proposed by-law amendment that would allow the Chapter to conduct future elections electronically. Ballots must be returned by May 12

## Chapter Recognizes New Fellows & New Certified Planners

Recent announcements by APA are cause for the New York Metro Chapter to celebrate the achievements of 22 Chapter members. Two individuals were recognized for their decades of experience and leadership in the profession while 20 planners have successfully advanced their position as certified planners.

Amanda M. Burden, AICP and Ernest Watson Hutton Jr., AICP are among the national 2008 class of Fellows of the American Institute of Certified Planners, the professional institute of the American Planning Association. They will be inducted into the College of Fellows on April 27 at the APA National Planning Conference in Las Vegas.

**Amanda M. Burden** is Chair of the New York City Planning Commission and Director of the Department of City Planning.

Since her appointment in 2002, she has spearheaded Mayor Bloomberg's economic development initiatives with comprehensive rezonings and urban design master plans designed to catalyze commercial and residential development throughout the city. Among these are master plans for Lower Manhattan, Downtown Brooklyn, Long Island City and Jamaica in Queens, as well as the Hudson Yards on the far west side of Manhattan. In Greenpoint Williamsburg, Brooklyn, the Department is implementing a finely tuned plan to transform a two-mile stretch of underutilized formerly industrial waterfront land for use as parks and mixed-income housing, while protecting lower-scaled inland areas from out-of-character

construction. In West Chelsea, the Department's award-winning plan is reshaping the landscape by converting an abandoned elevated rail line once slated for demolition into a spectacular High Line Park. And throughout the city, the Department is using an innovative inclusionary zoning program to assist in the largest municipal affordable housing initiative in the country, and championing design excellence at every opportunity.



From 1983 until 1990, Commissioner Burden was responsible for the planning and design of Battery Park City and oversaw the design of all open spaces, including the Esplanade and the 30 acres of parkland. Ms. Burden's dedication to design excellence has been recognized locally and nationally, as recognized by the Cooper Hewitt National Design Museum, which presented her with its 2004 Design Patron award, and by Pratt Institute, which presented her with

*Continued on next page*

*New Fellow and Certified Planners  
(continued)*

an Honorary Doctorate in recognition of her commitment to setting high standards for urban projects, large and small. In 2008, Commissioner Burden has been presented with the Citizen's Committee Marietta Tree Award for Public Service, the Partnership for Livable Communities' Entrepreneurial American Leadership Award, and was named Travel & Leisure Magazine's 2008 Design Champion.

Commissioner Burden has been involved for many years with the city's cultural community and with civic groups dedicated to improving the quality of life in the city. She served as Chair of the Board of Creative Time, Inc., was a Member of the Board of the Center for Arts Education, the Nature Conservancy, the Correctional Association, the Architectural League, and of the Fund for the City of New York. She is a Trustee of the Louis Comfort Tiffany Foundation.



**Ernest Hutton** is a planner and urban designer whose professional and civic contributions have leveraged citizen and stakeholder visions into downtown, city-wide, and area plans and projects—creating quality design and devel-

positive cultural, economic and social impacts for their target communities.

AICP also announced the results of the November 2007 AICP exam. Twenty Chapter members passed the exam to become eligible for membership in AICP. They are:

**Douglas Adams**  
**Jeanmarie Brennan**  
**Christopher Cotter**  
**Michele Greig**  
**Brian Kehoe**  
**Youngsuk Kim**  
**Heather Lanza**  
**Ashley Ley**  
**Lissette Mendez**  
**John Morabito**  
**Suzanne Nienaber**  
**Eram Qadri**  
**Paul Rogalle**  
**Allison Ruddock**  
**Anthony Ruggiero**  
**Kovid Saxena**  
**Daniel Schack**  
**Mark Shuster**  
**Ron Slangen**  
**Yixin Wang**

**F&A**  
**ferrandino&associatesinc.**

Comprehensive Planning  
Land Use and Zoning  
Environmental Assessment  
Community Development  
Economic Development  
Real Estate/Market Analysis

Three West Main Street, Suite 214  
Elmsford, New York 10523  
(914) 345-5820  
[www.faplanners.com](http://www.faplanners.com)

 **CAMERON ENGINEERING  
& ASSOCIATES, LLP**

- Planning & Environmental Analysis
- Civil & Structural Engineering
- Site Development & Landscape Architecture
- Transportation & Traffic Engineering
- Mechanical, Electrical & Security Engineering
- Water & Wastewater Engineering
- Solid Waste Engineering
- Construction Management

100 Sunnyside Boulevard, Suite 100  
Woodbury, NY 11797  
Tel (516) 827-4900 Fax (516) 827-4920  
[www.cameronengineering.com](http://www.cameronengineering.com)

**JAC** **PLANNING CORP.**  
Planning and Environmental Consultants

- ◆ Environmental Impact Assessments & Statements
- ◆ Land Use/Zoning Analyses/Transportation Planning
- ◆ Public Participation and Community Outreach
- ◆ Certified Women-Owned Business Enterprise (WBE)

8 Bond Street, Suite 300  
Great Neck, NY 11021  
Tel. (516) 487-4549 Fax (516) 487-4576  
E-mail: [jacplan@optonline.net](mailto:jacplan@optonline.net)  
[www.jacplanning.com](http://www.jacplanning.com)

**SARATOGA  
ASSOCIATES**  
New York > Saratoga Springs

- > Planning and Economic Development
- > Landscape Architecture
- > Environmental and Regulatory Services
- > Civil Engineering
- > Architecture and Interior Design

299 Broadway, Suite 900, New York, NY 10007  
T 212.260.0250 F 212.979.0758  
[www.saratogaassociates.com](http://www.saratogaassociates.com)

# “Postcard to America” - Regional Planning Lessons From Down Under

By David Fields, AICP  
New York City Area Director

Worldwide new regional planning processes and changes in urban planning and urban design thinking are significantly shaping both the role and ideology of governments at different levels and the nature and emphasis of the urban development being delivered or sought. New York Metro Chapter members got a first-person account on February 13 of the planning forces at work in South East Queensland, Australia's fastest growing urban region, which is increasingly confronted by issues of sustainability.

In the presentation, “Postcard to America: Urban Design/Planning in South East Queensland,” three expert planners from Australia provided background into South East Queensland’s successful foray into regional planning. Warren Rowe, Greg Vann and John Byrne have all had significant parts to play from across different parts of governments and the private sector. Through looking at a variety of current and recent major urban projects, the panel explored some of the issues and participated in a professional dialogue with New York’s planning community.



Warren Rowe, Director of the Gold Coast City Council’s Division of Planning, Environment and Transport, explained that the regional Office of Urban Management (OUM) was created in 2004 as an election

commitment in response to population growth and media attention. The OUM’s role is to manage urban growth and infrastructure planning, and it has been granted authority to amend state and local government plans and policy. Beyond authority, the agency also has funding to implement infrastructure improvements, which offers municipalities additional incentive to coordinate their planning with regional efforts. With a focus on delivering outcomes that meet regional needs, the issues addressed by the OUM include urban growth boundaries; public versus private transport; transit-oriented development; and density, mix and affordability of urban housing.

Transit-oriented development (TOD) received an extended discussion. The panelists described the bigger picture of TOD based on connectivity and mix of uses. One example cited was a proposed transit station located between a planned hospital and university campus. While the individual developments were focused on site planning for their projects, the regional agency had the opportunity to bring the parties to the same table and discuss the greater benefits of connecting the uses and orienting them to the transit station.

“Many developments miss the issue of distance,” said Greg Vann, Director of Buckley Vann Town Planning Consultants and chair of the Queensland Government’s TOD Task Force. “Every additional 100 meters of walk distance [from transit] reduces the overall potential of the site.”

John Byrne, Adjunct Professor in Urban Design, Queensland University of Technology emphasized the need for TODs to mix more than just uses, but also a range within each use. “Mix is good. Housing types should support a range of ages, family sizes and economic classes.

The result of providing connectivity that is available to mixed community is a sustainable place where people can meet, learn and grow from each other.”

The session was co-sponsored by the New York Metro Chapter, NYMTC and the New York Chapter of the American Institute of Architects and was approved for 2.0 Certification Maintenance credits.



**STARR WHITEHOUSE**  
Landscape Architects  
and Planners PLLC

80 Broad Street, Suite 1801  
New York, New York 10004  
212.487.3272, Fax 212.487.3273

[www.starrwhitehouse.com](http://www.starrwhitehouse.com)

## BFJ Planning

PLANNING  
URBAN DESIGN  
ENVIRONMENTAL ANALYSIS  
REAL ESTATE CONSULTING  
TRANSPORTATION PLANNING

115 FIFTH AVENUE  
NEW YORK, NY 10003  
T. 212.353.7474  
F. 212.353.7494

[www.bfjplanning.com](http://www.bfjplanning.com) • [info@bfjplanning.com](mailto:info@bfjplanning.com)

## Join APA in Las Vegas Next Spring

There are some things in Vegas you can share with the folks back home. Come to the 100th National Planning Conference to find out what you can learn from this dynamic city — and from the thousands of planners and officials at the world's premier planning event.



# Andrew Haswell Green: “The Most Important Leader in Gotham’s Long History”

By Ethel Sheffer, AICP  
Chapter President

On a cold winter Sunday morning, a dedicated group of knowledgeable enthusiasts gathered in Central Park at about 105<sup>th</sup> Street to pay tribute to Andrew Haswell Green (1820-1903), one of New York’s great unsung master planners and reformers.

We gathered at a hard-to-find Me-



NY Metro Chapter President Ethel Sheffer addressing the group in Central Park

monial Bench, not even marked on park maps, to pay tribute to Green whom historian Kenneth Jackson described as “arguably the most important leader in Gotham’s long history.” This tribute was organized by Manhattan Borough Historian Michael Miscione and was attended by Borough President Scott M. Stringer, Parks Commissioner Adrian Benepe, a Green family member, Bill Pearson, Jackson and me, representing APA NY Metro.

It is amazing and sad that Green has not been honored more appropriately for his extraordinary role in the life of New York. Green headed the Board of Commission-

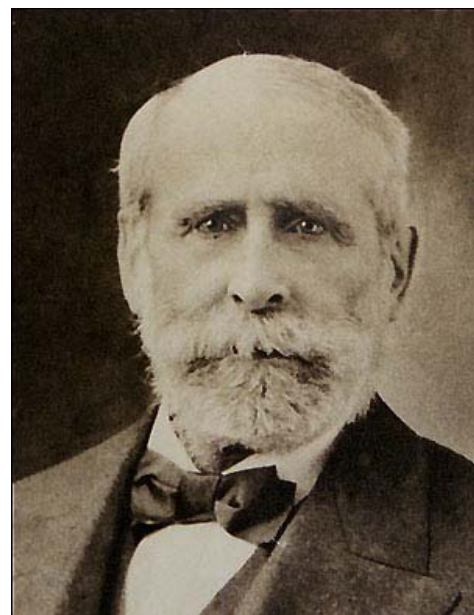
ers for Central Park, which created that New York masterpiece. As a civic leader and an effective behind-the-scenes politician, Green helped to create Riverside and Morningside Parks and helped to found the New York Public Library, the Metropolitan Museum, the American Museum of Natural History and the Bronx Zoo.

I was amazed to learn that he managed to get the State Legislature to give him the power to extend and revise the entire street system north of the park and to create many other infrastructure improvements north of 155<sup>th</sup> St. Probably his most remarkable achievement was his visionary plan for the consolidation of all five boroughs in 1898, which occurred after his lobbying for more than thirty years.

Green was an extraordinary planner before there was such a thing as a professional planner. He embodied the characteristics of a good planner: comprehensive mastery of detail and a broad long-range vision. He also showed that planning locally and regionally need not be contradictory and that technical and political skills have to go together to make great visions into a reality.

I thank Borough Historian Michael Miscione and our own Brodie Hefner of NY Metro for educating all of us about the “Father of Greater New York.” It was a lot of fun and a privilege to take part in the Central Park tribute to Andrew Green. Our Chapter hopes to con-

tinue to recognize this great reformer as we promote superior, comprehensive planning for our city and region.



Andrew Haswell Green Memorial Bench in Central Park

## Presidential Candidates Discuss Transportation Policy

By Michael A. Levine, AICP  
Vice President for Intergovernmental Affairs

Increasing funding for mass transit and implementation of important projects for New York, including the Second Avenue subway and East Side Access, were emphasized by representatives of four presidential candidates at a Candidates Forum on Transportation and Infrastructure held on January 31 at the NYU Kimmel Center. Samuel Schwartz served as the moderator for the stand-ins for Senator Hillary Clinton (D-NY), Senator Barack Obama (D-IL), Senator Mike Gravel (D-AK) and Representative Dennis Kucinich (D-OH). It was noted that while none of the other Republican candidates responded to the invitation, Senator John McCain (R-AZ) did make a concerted effort to have a representative attend.

Representing Senator Clinton was Frank McArdle, Senior Advisor to the General Contractors of New York, having previously served as the Commissioner of the NYC Department of Environmental Protection. Senator Obama was represented by David Narefsky, a partner in the law firm of Mayer Brown LLP. Speaking for Senator Gravel was David Eisenbach, the Senator's Director of Communications. Doug Biviano represented Congressman Kucinich as his NY Campaign Coordinator. Each spoke for approximately ten minutes leading to a 30-minute moderated discussion. The event was hosted by the Rudin Center for Transportation Policy and Management.

Keenly aware of the nature of their audience, none of the speakers chose to emphasize highway funding or issues regarding automobiles except to stress the need to refocus federal spending priorities away from simply building more roads. All four highlighted the need to prioritize the maintenance of aging infrastructure, citing last year's collapse of the I-34W bridge in Minneapolis as an example. Most of the speakers stuck to broad policy goals and steered clear of specific policy objectives. The few programs mentioned by name included SAFETEA-LU and the National Infrastructure Bank Act. There was a noticeable difference in the level of preparation and knowledge of the issues between representatives for the two leading candidates (Clinton and Obama) and the two other candidates.

A question-and-answer session followed the presentations. Foremost in the minds of the audience was congestion pricing. (The Governor's Office was scheduled to release its recommendations that afternoon.) McArdle took some in the audience by surprise when he expressed some skepticism about whether congestion pricing would work and cautioned that alternative modes of transportation may not be ready or equipped to handle the potential increased demand. One commenter observed that none of the four had discussed pedestrians and bicycles as part of their transportation priorities. The four speakers then took turns stressing the importance of these alternative modes of transit and the need to include alternative energy sources in any discussion of transportation policy.

In all, the candidates who were represented had more in common than they had differences. Of the four, Senator Clinton appeared to hold the most conservative views and Congressman Kucinich the most liberal, but they were not very far apart on the political spectrum.

---

A webcast of the event may be found at <http://wagner.nyu.edu/rudincenter/conferences/>

---



www.bae1.com

1133 Broadway, Suite 733  
New York, NY 10010  
212.683.4486 fax 212.202.7951

SACRAMENTO 530.750.2195  
WASHINGTON, DC 301.589.6660  
SAN FRANCISCO BAY AREA 510.547.9380



NELSON, POPE & VOORHIS, LLC  
ENVIRONMENTAL PLANNING • CONSULTING

- Planning & GIS
- Environmental Impact Statements
- Stormwater Permitting & Mitigation
- Site Feasibility
- Phase I/II Env. Site Assessments
- Site Remediation
- Wetland Permitting & Restoration
- Land Use Studies

Affiliated with the Civil Engineering firm of  
Nelson & Pope  
572 Walt Whitman Rd. Melville, NY 11747  
Tel. (631) 427-5665 Fax: (631) 427-5620  
email: [npv@nelsonpope.com](mailto:npv@nelsonpope.com)

## Chapter Becomes Partner of MillionTreesNYC

By Peter Miller, AICP  
Chapter Treasurer

The NY Metro Chapter has joined over 60 other organizations, community representatives and city, state and federal agencies in becoming an official partner of MillionTreesNYC – a citywide tree planting and stewardship initiative that has the goal of planting one million new trees throughout the City’s five boroughs by 2017. The Chapter serves on the program’s advisory committee and will help develop policies and partnerships to achieve this ambitious goal. In addition, the Chapter will help promote tree planting, education and outreach activities. There are a number of planning and policy initiatives in the offing, including refinements to the zoning amendments.

At a recent meeting, NYC Parks Department Deputy Commissioner Liam Kavanaugh announced that since its kick-off in October 2007 the program had added 30,531 new trees to the city’s streets, parks and private lands. At that rate, a back-of-the-envelope forecast shows that by 2017 the city would have about 600,000 more trees. This result falls far short of the one million trees goal but—hold on to your shovels—this initiative is just getting up to speed. Kavanaugh pointed out that this first planting season included 10,000 trees in one day, October 25.

Further, the effort is part of a well-developed strategic plan. The prime movers behind it are Mayor Bloomberg’s PlaNYC programs and Bette Midler’s New York Restoration Project (NYRP). Bloomberg and Midler came up with the million tree concept independently and almost simultaneously. They quickly and wisely decided to join forces. Bloomberg is providing the City Department of Parks & Recreation with over \$400 million over the next 10 years to plant 220,000 new street trees, create 800

new Greenstreets and reforest 2,000 acres of existing parkland. Along with zoning changes requiring developers to plant street trees, that adds up to an estimated 600,000 trees.

For starters, they chose five neighborhoods to bring concerted planting efforts and achieve tangible benefits. Those neighborhoods are Hunts Point and Morrisania in the Bronx, East New York in Brooklyn, East Harlem in Manhattan and Stapleton in Staten Island. The Park Department’s Trees for Public Health program was instrumental in identifying the neighborhoods most in need of an aggressive effort to increase the tree canopy and



reduce the heat island effects of urban space.

In a sort of the anti-NIMBY verve, community planners look jealously at the five target neighborhoods and ask: How can “my neighborhood” get MillionTreesNYC to focus here?

The targeted neighborhoods are only one aspect, however. To realize the additional trees, Parks and NYRP are enlisting community members and New York City-based organizations to get involved in tree planting and stewardship. Parks and NYRP are working with community partners to

public housing, campuses, playgrounds, business districts, commercial and residential developments, front yards and other private lands. As Parks begins planting street trees, NYRP and other non-profit organizations will leverage individual and corporate donations to purchase and plant trees on other publicly-accessible lands such as schoolyards, public housing campuses, libraries, community health centers and senior centers.

On September 17, 2007, the Department of City Planning referred for public review an amendment to the Zoning Resolution proposed by the Department that would establish a requirement for street tree planting in all zoning districts for all new developments and certain enlargements and conversions. There are provisions for alternative on-site planting locations, industrial uses are generally exempted.

As of the newsletter deadline, the matter was still pending before the City Council. Go to the Department of City Planning’s website for further details: [www.nyc.gov/html/dcp/html/street\\_tree\\_planting/index.shtml](http://www.nyc.gov/html/dcp/html/street_tree_planting/index.shtml).

Through a mix of public and private tree planting, MillionTreesNYC – an important goal of New York City’s sustainability initiative PlaNYC – will expand the City’s urban forest by 20%. As a result, New York City’s neighborhoods and residents will share in the many benefits that come from planting large canopy trees – more beautiful neighborhoods and parks; cleaner air and water; higher property values; energy savings; cooler summer streets, yards, and public open spaces; and a healthier, more environmentally sustainable City.

*Continued on next page*

*MillionTreesNYC (continued)*

No one expects these trees to plant themselves and, given the complexities and scale of doing big projects such as this in NYC, no one expects the plan to evolve strictly according to the current thinking. One concern is that the effort continue after the end of Bloomberg's term. Perhaps anticipating this issue, Bloomberg said, "PlaNYC is our plan to make New York a greener, greater city and Million Trees NYC is a key part in that effort. This is an ambitious goal and to achieve it we're going to need the help of the entire City. I'm encouraging all New Yorkers to get involved."

"It's the responsibility of our city's corporations and foundations, developers, block associations, policymakers, home owners and renters – all New Yorkers – to create a million living, growing legacies that will enhance our beloved city and sustain the world for generations to come," said NYRP Founder Bette Midler. "To walk under the branches of a tree that you have planted connects you to the roots of our past and the aspirations of our future."

As the nation's largest urban tree planting campaign, NYRP and its partnering organizations will seek the financial and in-kind support of individuals, corporations and foundations allowing the ambitious goals of MillionTreesNYC to be realized. In October, The Home Depot Foundation announced a three-year sponsorship of MillionTreesNYC – providing important resources to plant trees on public housing campuses and to establish a grant program that would provide small grants to community-

based organizations. Details about the Home Depot MillionTrees-NYC Community Grant Program will be announced in April.



The current plan foresees the City planting 60% and the private sector 40% of the one million. It breaks down the 600,000 public trees into 220,000 street trees, 280,000 in parks, and 100,000 from capital projects and the zoning change. One expectation is that private universities and other large institutions in the five boroughs will become major contributors as they implement campus renovations and other projects.

To learn more about MillionTreesNYC or how to get involved, visit [www.milliontreesnyc.org](http://www.milliontreesnyc.org).



611 Broadway, Suite 415  
New York, NY 10012  
Phone 212.598.9010  
Fax 212.598.9148  
[www.samschwartz.com](http://www.samschwartz.com)

**SAM SCHWARTZ LLC**  
TRAFFIC ENGINEERING • TRANSPORTATION PLANNING  
CONSTRUCTION-RELATED SERVICES • COMMUNITY OUTREACH  
ENVIRONMENTAL PLANNING • EMERGENCY OPERATIONS  
PLANNING AND DESIGN

**Zoning  
Real Estate Economics  
Environmental Studies  
Comprehensive Planning  
Community Development  
Land Development  
Housing**

**Saccardi & Schiff, Inc.**

445 Hamilton Avenue  
White Plains, NY 10601  
914-761-3582  
[sands@saccschiff.com](mailto:sands@saccschiff.com)  
[www.saccschiff.com](http://www.saccschiff.com)

**Nelson\Nygaard**  
consulting associates

*Transportation Planning  
for Livable Communities*

212-242-2490  
[www.nelsonnygaard.com](http://www.nelsonnygaard.com)

New York Boston San Francisco Portland

50 West 17th Street • NY, NY 10011

Tel. 212.529.6543 • 866.887.1988



**BL Companies**

DELIVERING INTEGRATED SERVICES  
ARCHITECTS • ENGINEERS • PLANNERS  
• ENVIRONMENTAL SCIENTISTS  
• LAND SURVEYORS

[www.blcompanies.com](http://www.blcompanies.com)



theHOK**Planning**Group

planning + landscape architecture + urban design

[www.hok.com](http://www.hok.com)

Bissera Antikarov, AICP, Assoc. AIA  
620 Avenue of the Americas, 6th Floor  
New York, NY 10011 T: 212.981.7370  
[bissera.antikarov@hok.com](mailto:bissera.antikarov@hok.com)

## “Take Me to the River” to Improve Upper Manhattan Community Access to the Hudson

Improved pedestrian access to the Hudson River from West Harlem to Washington Heights moved closer in January when Manhattan Borough President Scott M. Stringer, the West Harlem Art Fund and the NY State Department’s Division of Coastal Resources announced the design team for “Take Me to the River.”

Currently, access to Riverside Park is obstructed by the combination of the Amtrak railroad tracks and the Henry Hudson Parkway. “Without access, Manhattan’s magnificent riverfront may as well be on the moon,” said Borough President Stringer. “Our objective was to pick the team that would provide the community with the most viable and detailed road map for completing the project, and I am fully confident that the team will deliver.”

The winning team, led by Nautilus International Development Consulting, Inc. in association with Donna Walcavage Landscape Architecture + Urban Design, will create a set of recommendations to improve the appearance and maintenance of paths and sidewalks and to provide signage. It will also create a plan to strengthen the cultural and economic resources of West Harlem and southern Washington Heights.

Last year the Borough President and the West Harlem Art Fund obtained a \$475,000 grant for “Take Me to the River” under the Environmental Protection Fund Local Waterfront Revitalization Program through the Division of Coastal Resources. The funds will advance an earlier concept plan from 143th to 155th Streets. “This second phase of ‘Take Me to the River’ is a movement built over several years,” said Savona Bailey-McClain, Executive Director of The West Harlem Art Fund. “Residents, business and cultural leaders are coming together to reclaim a very important neighborhood that has many un-

tapped resources. Both West Harlem and Washington Heights can be very proud of this moment.”

“People living and working in West Harlem and southern Washington Heights today can barely see the Hudson River and are often unaware of the cultural treasures within their vibrant neighborhoods,” said Bonnie A. Harken, President of Nautilus International Development Consulting. “These projects will help implement sustainable ways for them to connect with Riverside Park, engage in the thriving retail environment on Broadway and enjoy the rich diversity of art and culture that surrounds them.”

“Take Me to the River” spans portions of West Harlem and southern Washington Heights, and includes the Broadway corridor from 135th to 157th Streets, extending west to Riverside Park. The selected work will consist of four main tasks:

- **Working Group Meetings & Public Presentation**
- **Existing Conditions & Use Analysis**
- **Streetscape Guidelines & Transportation Plan**
- **Cultural Corridor Plan**

Thirteen proposals were received by the Borough President from top urban planning, design, architecture and transportation planning firms. From these, the jury selected three team finalists in late November. The winning team is expected to complete this phase of “Take Me to the River” by the end of this summer. When the project is complete, the Manhattan Borough President’s Office will be ready to begin working towards final design and construction documents of the streetscape and transportation improvements and implementation of the cultural corridor plans.

Other members of the winning team include Eng-Wong, Taub & Associates, H3 Hardy Collaboration

Architecture LLC, Ernst & Young, Creative Cities, Studio L’Image, Warren Antonio James Architect, Kendal Henry Public Art & Urban Design and V.J. Associates Inc.



### Executive Committee Meeting Dates

The APA Metro Chapter Executive Committee will meet monthly on the following dates. Unless circumstances change, all meetings will take place in the 7<sup>th</sup> floor conference room at 11 Park Place, one block from City Hall. All Chapter members are welcome to attend. Meeting starts at 6:00 pm.

**Monday, April 21**  
**Monday, May 19**  
**Monday, June 16**

#### Eng-Wong, Taub & Associates

Planning and engineering solutions for traffic, parking, transit, bicycles and pedestrians.



[www.eng-wongtaub.com](http://www.eng-wongtaub.com)  
Certified MBE Firm

## Vision Long Island Promotes Smart Growth at the Local Level

By Eric Alexander  
Executive Director,  
Vision Long Island

Long Island is not widely known for thinking out of the box when it comes to planning. More often than not, it is known as the birthplace of American suburbia, sprawl and for its automobile-dominated landscape. Vision Long Island, a non-profit organization founded in 1997, has the mission of implementing Smart Growth planning and principles in a contentious environment. A key objective is to strengthen communities by actively involving them in land use planning.

Smart Growth focuses on infill, redevelopment, and preservation. It supports mixed-use, mixed-income communities that are convenient, attractive, pedestrian friendly and that make affordable housing and public transportation desirable and realistic. Vision has promoted Smart Growth through 1,300 presentations, 13 major events and 15 community processes.

We are effectively adapting Long Island municipal and regional planning to support Smart Growth, both in process and in codes and regulations. We are involved in all levels of government, have helped shaped over 20 government policies and are helping to form a Council of Governments that will enable municipalities to constructively participate in regional planning. Much of our work occurs in partnership with groups like Regional Plan Association, NYS Smart

Growth Alliance, Tri-State Transportation Campaign, League of Conservation Voters, Neighborhood Network, Nassau Council of Chambers of Commerce, Nassau Village Officials Association and Catholic Charities. Working collaboratively we understand Long Island's challenges, and strategize best ways forward.

Major events, like our annual Smart Growth Summit, held in November, and our Smart Growth Awards, presented in June, convene advocacy, expert and decision-making power to tackle diverse issues connected to land use. With broad support, Vision launched a formal *Blueprint for Smart Growth*, drawn from over 200 Smart Growth Summit speakers, and countless presentations throughout the region. It includes specific policy recommendations addressing transportation, housing, the environment, infrastructure, taxes and more.

Other key programs include addressing energy and global climate change on Long Island, as well as affordable housing and gentrification. In order to maintain its economy and quality of life, Long Island needs to create 25,000 additional units of affordable housing, preserve 25,000 acres of open space and address a pending energy crisis. Smart Growth planning and development is a key. There are 64 Smart Growth projects on Long Island that need our careful monitoring and support.

Despite the cultural and infrastructure challenges, Vision has seen some

successes on Long Island:

- Out east in Suffolk County, Vision recently completed a community visioning to help residents of Rocky Point revitalize their ailing downtown with additional housing stock and improvements to civic space and infrastructure. In conjunction with an enthusiastic and supportive community, Vision was able to provide education, design and technical assistance to help them create their vision. Gordon Heights is currently implementing their visioning goal to put their community on the map with a village green, community center, affordable housing as well as sidewalk and infrastructure improvements, to make a walkable downtown.
- Vision has assisted the community of Bayshore in achieving their goals for revitalization. The most recent renovations occurred at the Bay Shore Marina, a formerly underutilized and underappreciated waterfront asset. With Vision's aid, the revitalization will bring housing, people and activity to the marina.
- In Nassau County, the Village of Farmingdale is in the process of implementing its visioning from 2006. With guidance from Vision, the Village has created a Downtown Revitalization Committee to focus on applying the plan that includes additional housing downtown, streetscape improvements and transit-oriented development.

*Continued on next page*



Vision Long Island (continued)

- At the Nassau Hub, Vision helped form a coalition of elected officials, civic and environmental organizations and chambers of commerce to assess the proposal from the Lighthouse Development Group. The Nassau Business and Community Planning Coalition continues to meet as a watchdog, mediator and information source for the Nassau HUB project.

In an effort to better inform Long Island, Vision has transformed its quarterly newsletter, *Smart Talk*, into a monthly with Smart Growth News supplements hitting the inbox of over 8,000 Long Islanders each week. *Smart Talk* features a colorful lineup of news and views on diverse Smart Growth issues, as well as weekend planners, details on relevant special events and public hearing notices.

Contact Vision Long Island at 631.261.0242 or by email at [info@visionlongisland.org](mailto:info@visionlongisland.org). Visit the website at [www.visionlongisland.org](http://www.visionlongisland.org).



636 Broadway • Suite 1218  
New York, NY 10012  
212/965-0690 • 212/965-0470 Fax  
[www.acp-planning.com](http://www.acp-planning.com)

# FX FOWLE

MARK STRAUSS, FAIA, AICP, PRINCIPAL  
FX FOWLE ARCHITECTS, PC  
FX FOWLE INTERNATIONAL, LLC  
22 WEST 19 ST | NEW YORK, NY 10011  
T 212.627.1700 | [WWW.FXFOWLE.COM](http://WWW.FXFOWLE.COM)



## Twentieth Annual Dinner Meeting

# Stewart Airport: A New Beginning



**Monday, March 31, 2008**

**Minisceongo Golf Club**

**Pomona, NY at 7:00 pm**

**\$35 per person**



Diannae Ehler, a civil engineer and the Port Authority's first General Manager of Stewart International Airport, will be the guest speaker at the dinner. She will discuss the changes made to date since the Port Authority took over the lease for the airport, anticipated short-term plans and the highest priorities for the airport. Attend the dinner to listen and ask questions about the Port Authority's role at Stewart International Airport - all while wine and dining at the Minisceongo Golf Club.

Join us for an evening of good food and great company.

**We look forward to seeing you at the dinner!**  
For additional information call Arlene Miller at 845-364-3448.

Rockland Municipal Planning Federation



# American Planning Association New York Metro Chapter

11 Park Place, Suite 914, New York, NY 10007

tel 646.278.6757; fax 646-278-6758; office@nyplanning.org; www.nyplanning.org

**Address Changes:** Contact APA's Chicago Headquarters Office: [www.planning.org/myapa/](http://www.planning.org/myapa/)  
**Consultant and Job ads:** Contact Mary Findlen 646-278-6757 or [mfindlen@nyplanning.org](mailto:mfindlen@nyplanning.org)

## Executive Committee

### President

Ethel Sheffer, AICP  
[insightsheffer@mindspring.com](mailto:insightsheffer@mindspring.com)

### Vice Presidents, Programs

Brodie Hefner, AICP  
[brodie\\_hefner@hud.gov](mailto:brodie_hefner@hud.gov)  
Nicolette Wagoner  
[nwagoner@saratogaassociates.com](mailto:nwagoner@saratogaassociates.com)

### Vice Presidents, Committees

Donald Burns, AICP  
[donald.burns@fta.dot.gov](mailto:donald.burns@fta.dot.gov)  
Michael Marrella, AICP  
[m\\_marrel@planning.nyc.gov](mailto:m_marrel@planning.nyc.gov)

### Vice President, Professional Development

Sarah Yackel, AICP  
[s.yackel@bfjplanning.com](mailto:s.yackel@bfjplanning.com)

### Vice President, Intergovernmental Affairs

Michael A. Levine, AICP  
[levinem@northhempstead.com](mailto:levinem@northhempstead.com)

### Secretary

Jennifer Posner  
[jposner@planning.nyc.gov](mailto:jposner@planning.nyc.gov)

### Treasurer

Peter Miller, AICP  
[pmiller@panynj.gov](mailto:pmiller@panynj.gov)

### Long Island Representative

Andrew Freleng, AICP  
[andrew.freleng@suffolkcountynyny.gov](mailto:andrew.freleng@suffolkcountynyny.gov)

### Lower Hudson Valley East Representative

Tracey S. Corbitt, AICP  
[tsc1@westchestergov.com](mailto:tsc1@westchestergov.com)

### Lower Hudson Valley West Representative

Alan Sorensen, AICP  
[planit@hvc.rr.com](mailto:planit@hvc.rr.com)

### New York City Representative

David Fields, AICP  
[planman72@yahoo.com](mailto:planman72@yahoo.com)

### Immediate Past President

Janice Jijina, AICP  
[jjijina@cameronengineering.com](mailto:jjijina@cameronengineering.com)

### APA Region I Board Director

David W. Woods, AICP  
[dwoods@brookhaven.org](mailto:dwoods@brookhaven.org)

### AICP Region I Commissioner

Anna Breinich, AICP  
[abreinich@verizon.net](mailto:abreinich@verizon.net)

## Committee Chairs

### Aviation

Mark Zannoni  
[mzannoni@gmail.com](mailto:mzannoni@gmail.com)

### Awards

Michael Bradley, AICP  
[michael.bradley@parks.nyc.gov](mailto:michael.bradley@parks.nyc.gov)  
Ellen Ryan, AICP  
[ERYan@planning.nyc.gov](mailto:ERYan@planning.nyc.gov)

### Economic Development

Tom Jost  
[tom.jost@arup.com](mailto:tom.jost@arup.com)

### Environmental Planning

Robert M. White, AICP  
[Bob\\_White@akrf.com](mailto:Bob_White@akrf.com)  
Stephen Whitehouse  
[sw@starmwhitehouse.com](mailto:sw@starmwhitehouse.com)

### Housing and Neighborhood Revitalization

Gary Brown  
[gdbroun@ktrfirst.com](mailto:gdbroun@ktrfirst.com)

### Planners for Ethnic and Cultural Diversity

Sarah Whitham  
[swhitha@planning.nyc.gov](mailto:swhitha@planning.nyc.gov)

### School Relations

Tracy Sayegh  
[tsayegh@gmail.com](mailto:tsayegh@gmail.com)

### Strategic Planning

Mark Marrella  
[m\\_marrel@planning.nyc.gov](mailto:m_marrel@planning.nyc.gov)  
Tracy Savegh  
[tracysavegh@gmail.com](mailto:tracysavegh@gmail.com)  
Jennifer Posner  
[jposner@planning.nyc.gov](mailto:jposner@planning.nyc.gov)

### Transportation

David Fields, AICP  
[planman72@yahoo.com](mailto:planman72@yahoo.com)  
Janet K. Jenkins, AICP  
[jjenkins@eng-wongtaub.com](mailto:jjenkins@eng-wongtaub.com)

### Urban Design

Rex Curry  
[rexcurry@earthlink.net](mailto:rexcurry@earthlink.net)  
Robert Lane  
[lane@rpa.org](mailto:lane@rpa.org)

### Waterfront

Bonnie Harken  
[harken@nautilus-international.com](mailto:harken@nautilus-international.com)  
Robert W. Balder  
[Robert\\_Balder@Gensler.com](mailto:Robert_Balder@Gensler.com)

### Zoning

Carol Rosenthal  
[carol.rosenthal@friedfrank.com](mailto:carol.rosenthal@friedfrank.com)  
Zachary Bernstein  
[zbems@gmail.com](mailto:zbems@gmail.com)

## Student Representatives

### Columbia University

Marc Bleyer  
[mcb205@columbia.edu](mailto:mcb205@columbia.edu)  
Cathy Kim  
[chk2118@columbia.edu](mailto:chk2118@columbia.edu)

### Hunter College

Jessica Gable  
[jegleg@gmail.com](mailto:jegleg@gmail.com)

### New York University

Chris Gorman  
[cmg345@nyu.edu](mailto:cmg345@nyu.edu)

### Pratt Institute

Todd Okolichany  
[tokolichany@hotmail.com](mailto:tokolichany@hotmail.com)

## Staff

### Chapter Administrator

Mary Findlen  
[mfindlen@nyplanning.org](mailto:mfindlen@nyplanning.org)

### Webmaster

Brian Carson  
[bcarson@nyplanning.org](mailto:bcarson@nyplanning.org)

### MetroPlanner

Ed Buroughs, AICP, Editor  
[editor@nyplanning.org](mailto:editor@nyplanning.org)  
Matt Schwartz, Layout & Graphics  
[intern@nyplanning.org](mailto:intern@nyplanning.org)

### Chapter Intern

Matt Schwartz  
[intern@nyplanning.org](mailto:intern@nyplanning.org)

## Write an Article for MetroPlanner!

Have you created an innovative zoning approach? Are you involved in a groundbreaking or controversial development proposal? Do you know a planner who would be great to interview? Let us know.

MetroPlanner welcomes submissions of articles, reports, photos and illustrations on current planning issues, topics and developments throughout the NY Metro Chapter region which includes New York City and the counties of Nassau, Suffolk, Westchester, Rockland, Putnam, Orange, Dutchess, Sullivan and Ulster. Feel free to first run an idea by us.

E-mail news, articles and suggestions to [editor@nyplanning.org](mailto:editor@nyplanning.org). You must include METROPLANNER in the subject line.

## Chapter Office Moves Up

The office for the NY Metro Chapter has moved two floors up at 11 Park Place. The address is now Suite 914, 11 Park Place, New York NY 10007. The phone numbers have changed to:

**Tel: 646.278.6757**

## Job Postings

Online at the NY Metro website at [www.nyplanning.org/jobs.html](http://www.nyplanning.org/jobs.html)